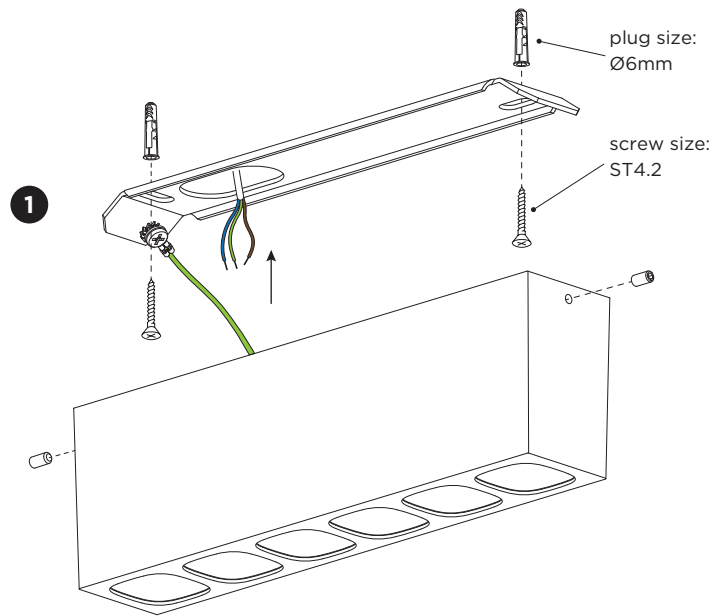
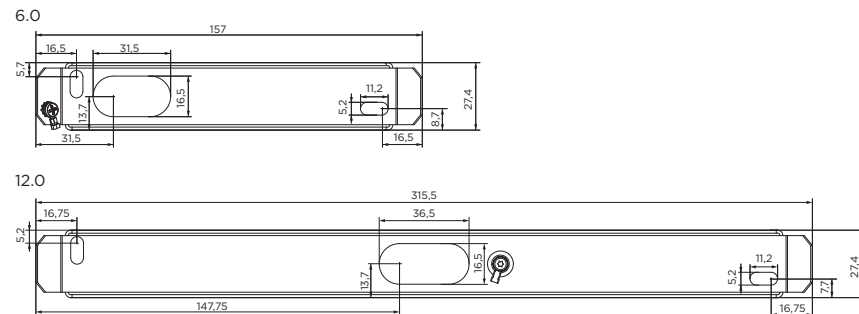


PIRRO PETIT SURFACE

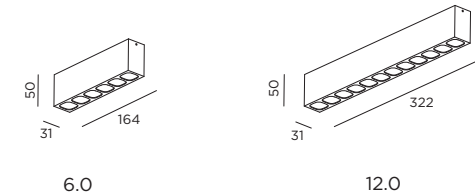
INSTALLATION INSTRUCTIONS | FEBRUARY 2024



Mounting base:



DIMENSIONS

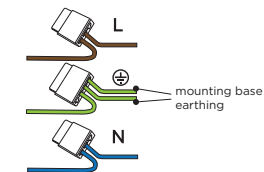


MOUNTING INSTRUCTION

- 1 Remove the mounting base from the luminaire by loosening the socket screws and mount it on the ceiling with screws (included).

2 POWER CONNECTION

Connect to 220-240V.



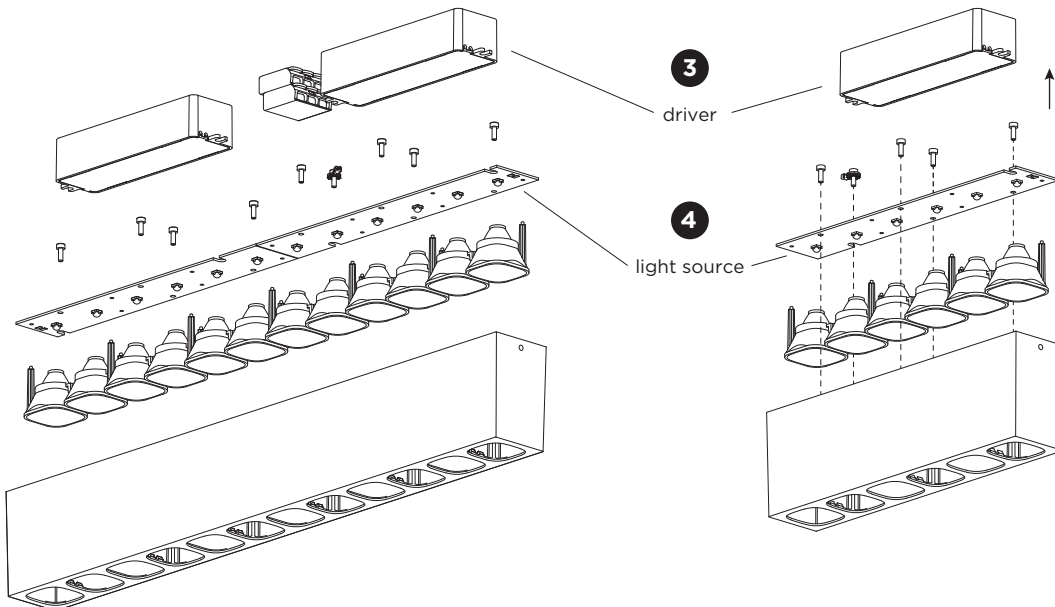
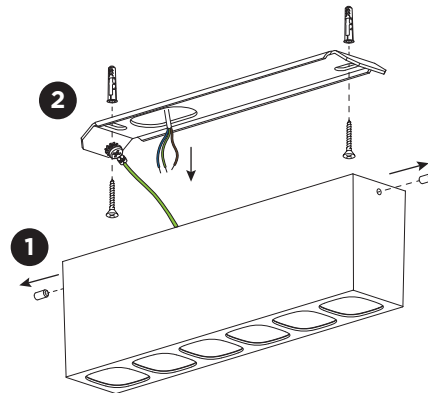
Connect the earth cable.



- 3 Fix the luminaire on the base with the socket screws.

PIRRO PETIT SURFACE

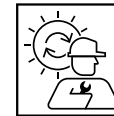
INSTALLATION INSTRUCTIONS | FEBRUARY 2024



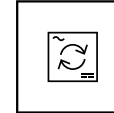
DISMOUNTING AND RECYCLING INSTRUCTIONS

Light source & driver

- 1 Unscrew the socket screws on the side and pull down the luminaire.
- 2 Unscrew the back plate to remove it.
- 3 Remove the driver(s) by loosening wires.
- 4 Remove the light source(s) from the housing by loosening the screws.



The light source is replaceable by Wever & Ducré or by a professional with explicit authorisation. For more information please contact your local Wever & Ducré customer service point.



The driver can be replaced by the end user.



This luminaire contains a light source with the energy class F.



WEVER & DUCRÉ
LIGHTING

WEVER & DUCRÉ BV

Spinnerijstraat 99/21, 8500 Kortrijk, Belgium
weverducre.com