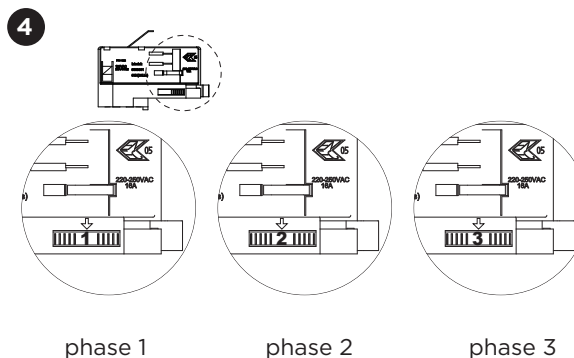
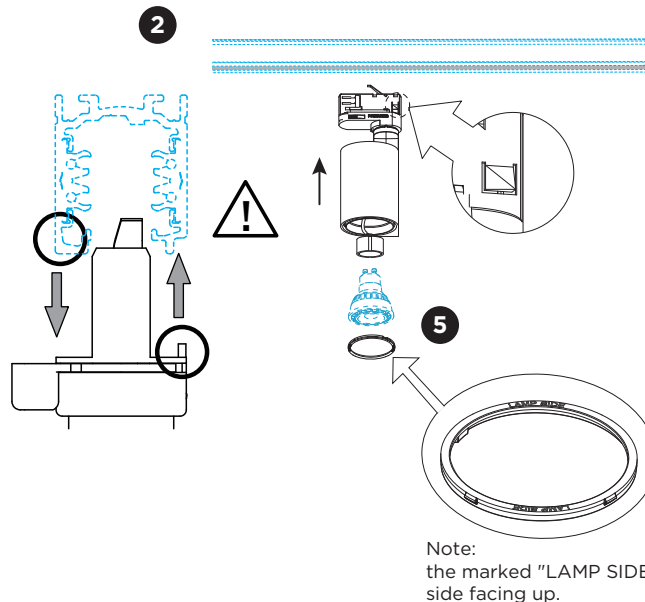
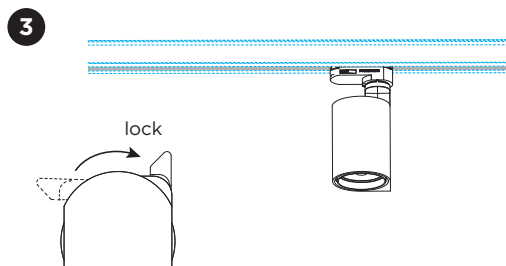
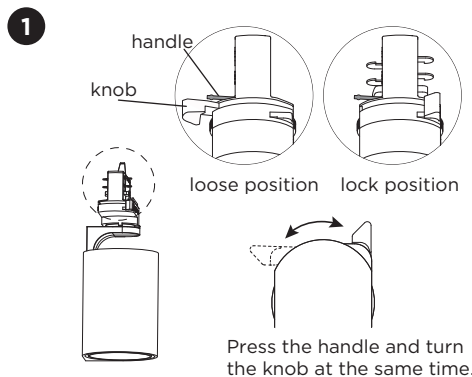


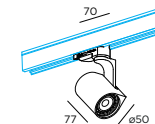
SQUBE on track 1.0 (3-phase)

INSTALLATION INSTRUCTIONS | NOVEMBER 2023

Install the adapter into the track.



DIMENSIONS



MOUNTING INSTRUCTION

- 1** Make sure the knob is on the loose position.
- 2** Push the fixture into the track.
- 3** Turn the knob to the lock position by pressing the handle and turning the knob at the same time.
- 4** Select the phase by aligning it with the arrow on the adapter.
- 5** Install a PAR16 bulb (bulb is not included) and lock the bulb with the round clip.

Note: it's not allowed to slide the fixture in the track. If you want to change the location of the fixture in the track, please pull the fixture out of the track and install it on the correct position.

