

## INSTALLATION INSTRUCTIONS | MARCH 2023

Do not cut off or open the water stopper on the cable.

water stopper

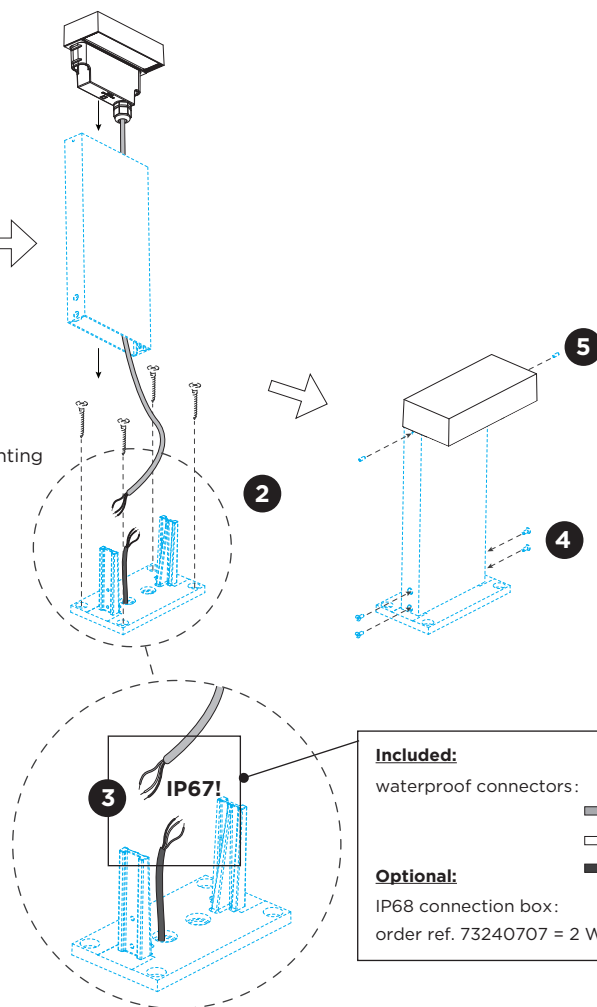
1

pole

mounting base

Technical drawing of a rectangular plate with the following dimensions and features:

- Overall width: 160
- Overall height: 91
- Inner width (between vertical lines): 140
- Distance from left edge to first vertical line: 10
- Distance from first vertical line to center of first hole: 46
- Distance between centers of two holes: 40
- Distance from center of second hole to right edge: 46
- Distance from bottom edge to center of first hole: 60
- Distance from bottom edge to center of second hole: 60
- Distance from bottom edge to center of third hole: 60
- Distance from bottom edge to center of fourth hole: 60
- Distance from bottom edge to center of fifth hole: 60
- Distance from bottom edge to center of sixth hole: 60
- Distance from bottom edge to center of seventh hole: 60
- Distance from bottom edge to center of eighth hole: 60
- Distance from bottom edge to center of ninth hole: 60
- Distance from bottom edge to center of tenth hole: 60
- Distance from bottom edge to center of eleventh hole: 60
- Distance from bottom edge to center of twelfth hole: 60
- Distance from bottom edge to center of thirteenth hole: 60
- Distance from bottom edge to center of fourteenth hole: 60
- Distance from bottom edge to center of fifteenth hole: 60
- Distance from bottom edge to center of sixteenth hole: 60
- Distance from bottom edge to center of seventeenth hole: 60
- Distance from bottom edge to center of eighteenth hole: 60
- Distance from bottom edge to center of nineteenth hole: 60
- Distance from bottom edge to center of twentieth hole: 60
- Distance from bottom edge to center of twenty-first hole: 60
- Distance from bottom edge to center of twenty-second hole: 60
- Distance from bottom edge to center of twenty-third hole: 60
- Distance from bottom edge to center of twenty-fourth hole: 60
- Distance from bottom edge to center of twenty-fifth hole: 60
- Distance from bottom edge to center of twenty-sixth hole: 60
- Distance from bottom edge to center of twenty-seventh hole: 60
- Distance from bottom edge to center of twenty-eighth hole: 60
- Distance from bottom edge to center of twenty-ninth hole: 60
- Distance from bottom edge to center of thirtieth hole: 60
- Distance from bottom edge to center of thirty-first hole: 60
- Distance from bottom edge to center of thirty-second hole: 60
- Distance from bottom edge to center of thirty-third hole: 60
- Distance from bottom edge to center of thirty-fourth hole: 60
- Distance from bottom edge to center of thirty-fifth hole: 60
- Distance from bottom edge to center of thirty-sixth hole: 60
- Distance from bottom edge to center of thirty-seventh hole: 60
- Distance from bottom edge to center of thirty-eighth hole: 60
- Distance from bottom edge to center of thirty-ninth hole: 60
- Distance from bottom edge to center of fortieth hole: 60
- Distance from bottom edge to center of forty-first hole: 60
- Distance from bottom edge to center of forty-second hole: 60
- Distance from bottom edge to center of forty-third hole: 60
- Distance from bottom edge to center of forty-fourth hole: 60
- Distance from bottom edge to center of forty-fifth hole: 60
- Distance from bottom edge to center of forty-sixth hole: 60
- Distance from bottom edge to center of forty-seventh hole: 60
- Distance from bottom edge to center of forty-eighth hole: 60
- Distance from bottom edge to center of forty-ninth hole: 60
- Distance from bottom edge to center of fiftieth hole: 60
- Distance from bottom edge to center of fifty-first hole: 60
- Distance from bottom edge to center of fifty-second hole: 60
- Distance from bottom edge to center of fifty-third hole: 60
- Distance from bottom edge to center of fifty-fourth hole: 60
- Distance from bottom edge to center of fifty-fifth hole: 60
- Distance from bottom edge to center of fifty-sixth hole: 60
- Distance from bottom edge to center of fifty-seventh hole: 60
- Distance from bottom edge to center of fifty-eighth hole: 60
- Distance from bottom edge to center of fifty-ninth hole: 60
- Distance from bottom edge to center of sixtieth hole: 60
- Distance from bottom edge to center of sixty-first hole: 60
- Distance from bottom edge to center of sixty-second hole: 60
- Distance from bottom edge to center of sixty-third hole: 60
- Distance from bottom edge to center of sixty-fourth hole: 60
- Distance from bottom edge to center of sixty-fifth hole: 60
- Distance from bottom edge to center of sixty-sixth hole: 60
- Distance from bottom edge to center of sixty-seventh hole: 60
- Distance from bottom edge to center of sixty-eighth hole: 60
- Distance from bottom edge to center of sixty-ninth hole: 60
- Distance from bottom edge to center of seventieth hole: 60
- Distance from bottom edge to center of seventy-first hole: 60
- Distance from bottom edge to center of seventy-second hole: 60
- Distance from bottom edge to center of seventy-third hole: 60
- Distance from bottom edge to center of seventy-fourth hole: 60
- Distance from bottom edge to center of seventy-fifth hole: 60
- Distance from bottom edge to center of seventy-sixth hole: 60
- Distance from bottom edge to center of seventy-seventh hole: 60
- Distance from bottom edge to center of seventy-eighth hole: 60
- Distance from bottom edge to center of seventy-ninth hole: 60
- Distance from bottom edge to center of eightieth hole: 60
- Distance from bottom edge to center of eighty-first hole: 60
- Distance from bottom edge to center of eighty-second hole: 60
- Distance from bottom edge to center of eighty-third hole: 60
- Distance from bottom edge to center of eighty-fourth hole: 60
- Distance from bottom edge to center of eighty-fifth hole: 60
- Distance from bottom edge to center of eighty-sixth hole: 60
- Distance from bottom edge to center of eighty-seventh hole: 60
- Distance from bottom edge to center of eighty-eighth hole: 60
- Distance from bottom edge to center of eighty-ninth hole: 60
- Distance from bottom edge to center of ninetieth hole: 60
- Distance from bottom edge to center of ninety-first hole: 60
- Distance from bottom edge to center of ninety-second hole: 60
- Distance from bottom edge to center of ninety-third hole: 60
- Distance from bottom edge to center of ninety-fourth hole: 60
- Distance from bottom edge to center of ninety-fifth hole: 60
- Distance from bottom edge to center of ninety-sixth hole: 60
- Distance from bottom edge to center of ninety-seventh hole: 60
- Distance from bottom edge to center of ninety-eighth hole: 60
- Distance from bottom edge to center of ninety-ninth hole: 60
- Distance from bottom edge to center of one hundred hole: 60



order ref. 73240707 = 2 WAYS 3x1,5 Ø8-10mm

- 1 Remove the mounting base from the pole by loosening the screws.
- 2 Mount the base on the floor with screws (screws are not included).
- 3 **POWER CONNECTION**  
Connect to 220-240V. Connect the wires with the waterproof connections. Please see the detail method in the separate instruction sheet of waterproof connection.
- 4 Fix the pole on the mounting base with the included screws.
- 5 Fix the luminaire on the pole with the included socket screws.

*For installation with concrete ground fixation, please see the page 2.*

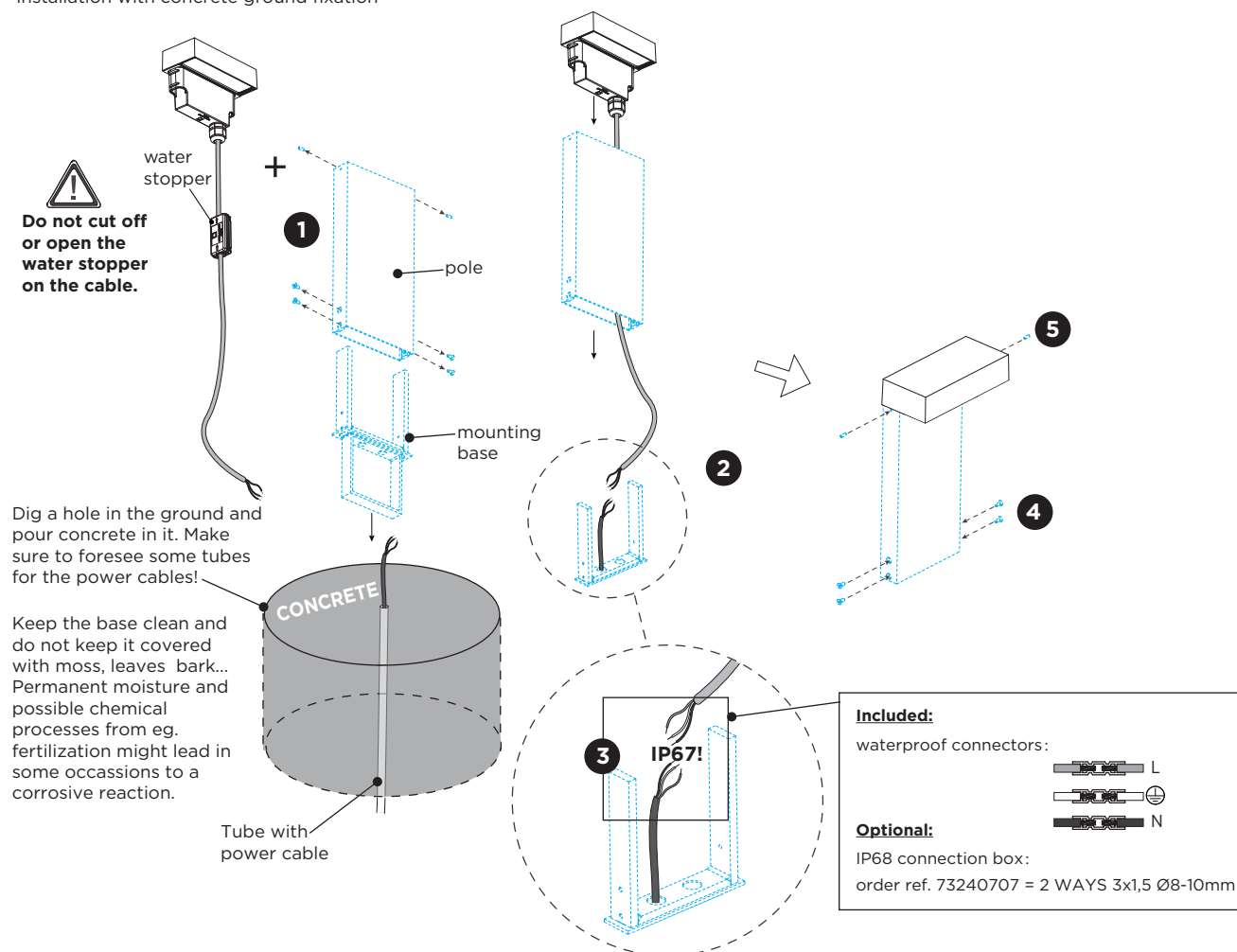
2819-010-741-00 v2



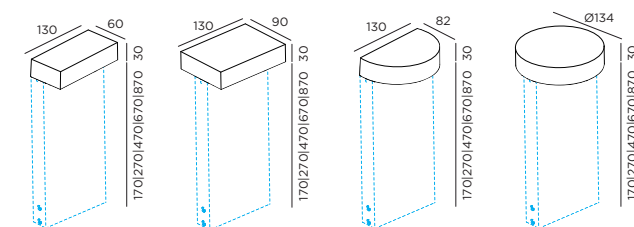
**WEVER & DUCRÉ**  
LIGHTING

Spinnerijstraat 99/21, 8500 Kortrijk, Belgium  
weverducre.com

installation with concrete ground fixation



## DIMENSIONS



PALOS  
CARRÉ 1.0

PALOS  
CARRÉ 2.0

PALOS  
ROUND 1.0

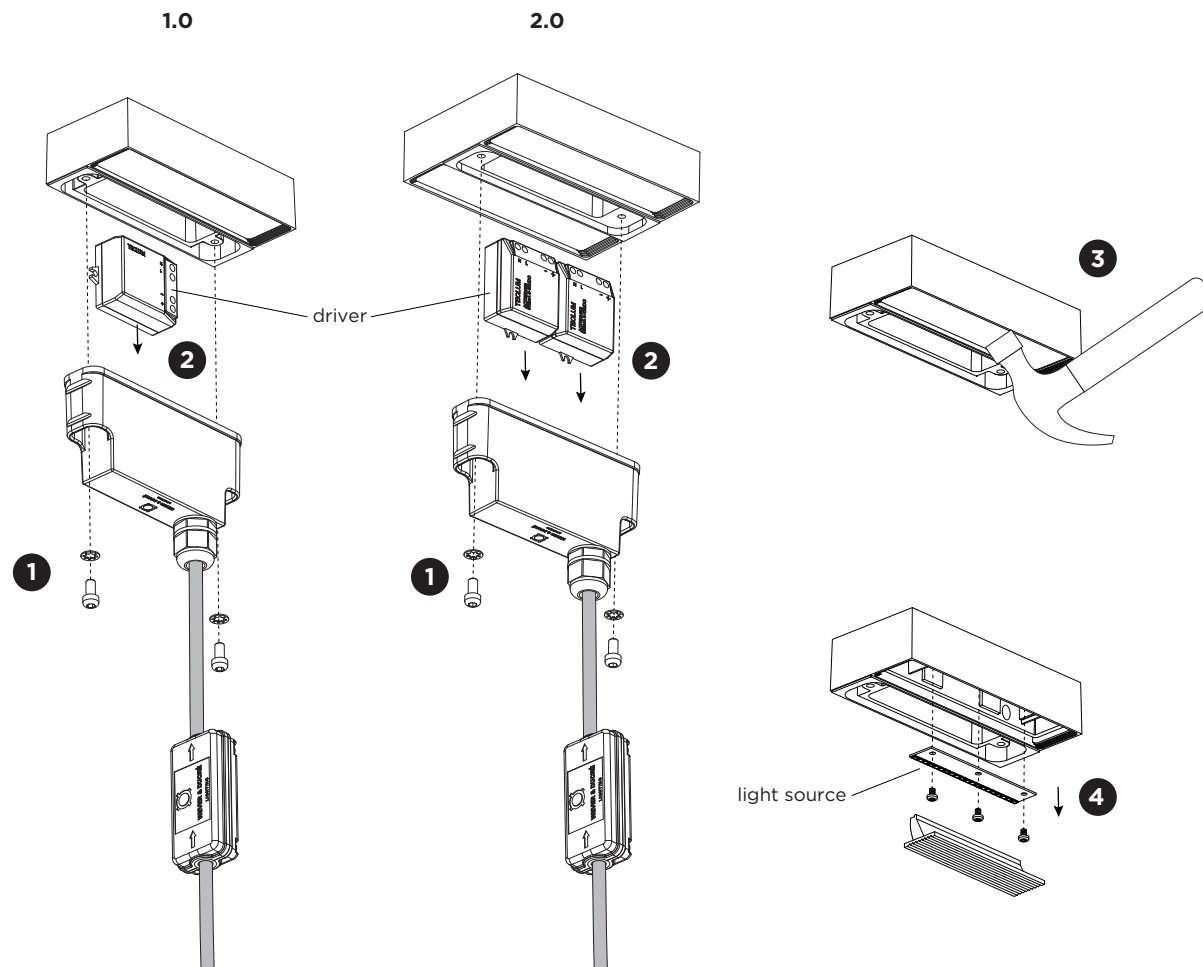
PALOS  
ROUND 2.0

## MOUNTING INSTRUCTION

- 1 Remove the mounting base from the pole by loosening the screws.
- 2 Mount the base in the ground with concrete.
- 3 **POWER CONNECTION**  
Connect to 220-240V. Connect the wires with the waterproof connections. Please see the detail method in the separate instruction sheet of waterproof connection.
- 4 Fix the pole on the mounting base with the included screws.
- 5 Fix the luminaire on the pole with the included socket screws.

# PALOS

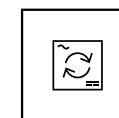
INSTALLATION INSTRUCTIONS | MARCH 2023



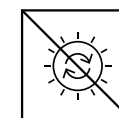
## DISMOUNTING AND RECYCLING INSTRUCTIONS

Light source & driver

- 1 Unscrew the housing and remove it from the luminaire.
- 2 Loosen the wires to remove the driver(s).
- 3 Break the glass.
- 4 Take out the lens and unscrew the light source.



The driver(s) can be replaced by the end user.



The light source is not replaceable.



This luminaire contains a light source with the energy class D.



**WEVER & DUCRÉ**  
LIGHTING

**WEVER & DUCRÉ BV**

Spinnerijstraat 99/21, 8500 Kortrijk, Belgium  
weverducre.com