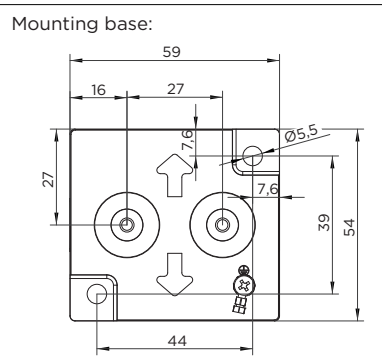
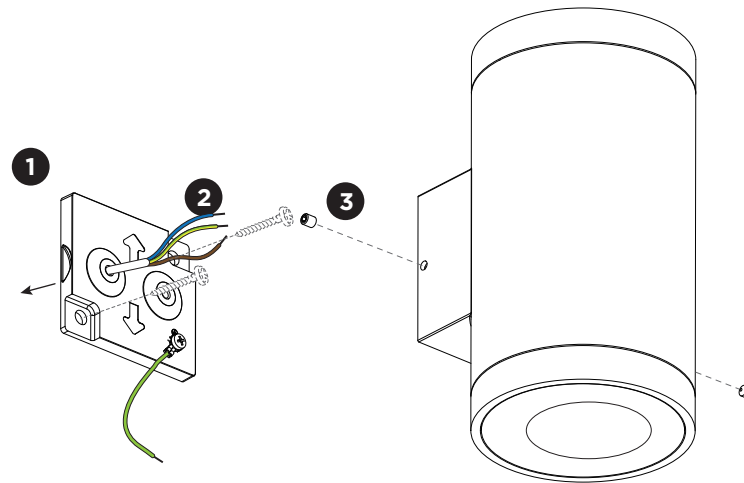
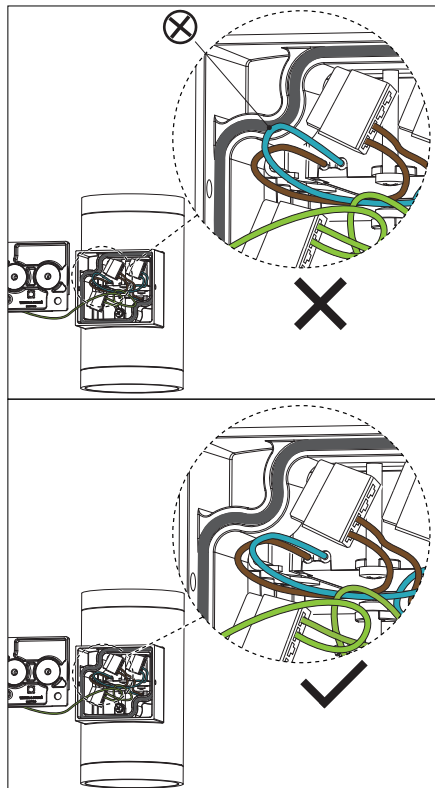


TUBE wall 2.0 LED

INSTALLATION INSTRUCTIONS | AUGUST 2023

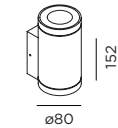
When installing, please make sure to place the wires and connectors in the surrounding circle of poly-foam sealing agent to prevent possible risks for water infiltration.



Always use a matching grommet in the overview table.

	A	B	C
CABLE			
TYPE	ROUND H05RN-F H07RN8-F H07RN-F	ROUND H05RN-F	ROUND
OUTSIDE Ø	min 6.8mm max 8.9mm	min 5mm max 6.8mm	min 1.5mm max 2.6mm
CONDUCTION SECTION	2or3x 0.75mm ² 2or3x 1.0mm ² 2or3x 1.5mm ²	2or3x 0.75mm ² 2x 1.0mm ²	0.75mm ² 1.5mm ²

DIMENSIONS



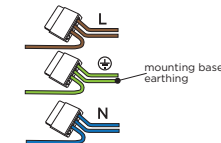
2.0 LED

MOUNTING INSTRUCTION

- 1 Remove the mounting base by loosening the socket screws and fix it to the wall with screws (screws are not included).

- 2 **POWER CONNECTION**

Connect to 220-240V.

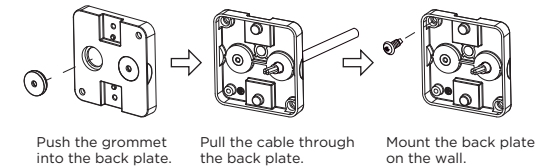


Connect the earth cable.



Always use a matching grommet based on the used 220-240V cable and the corresponding type in the overview table.

for example:



- 3 Fix the fixture to the mounting base with the socket screws.

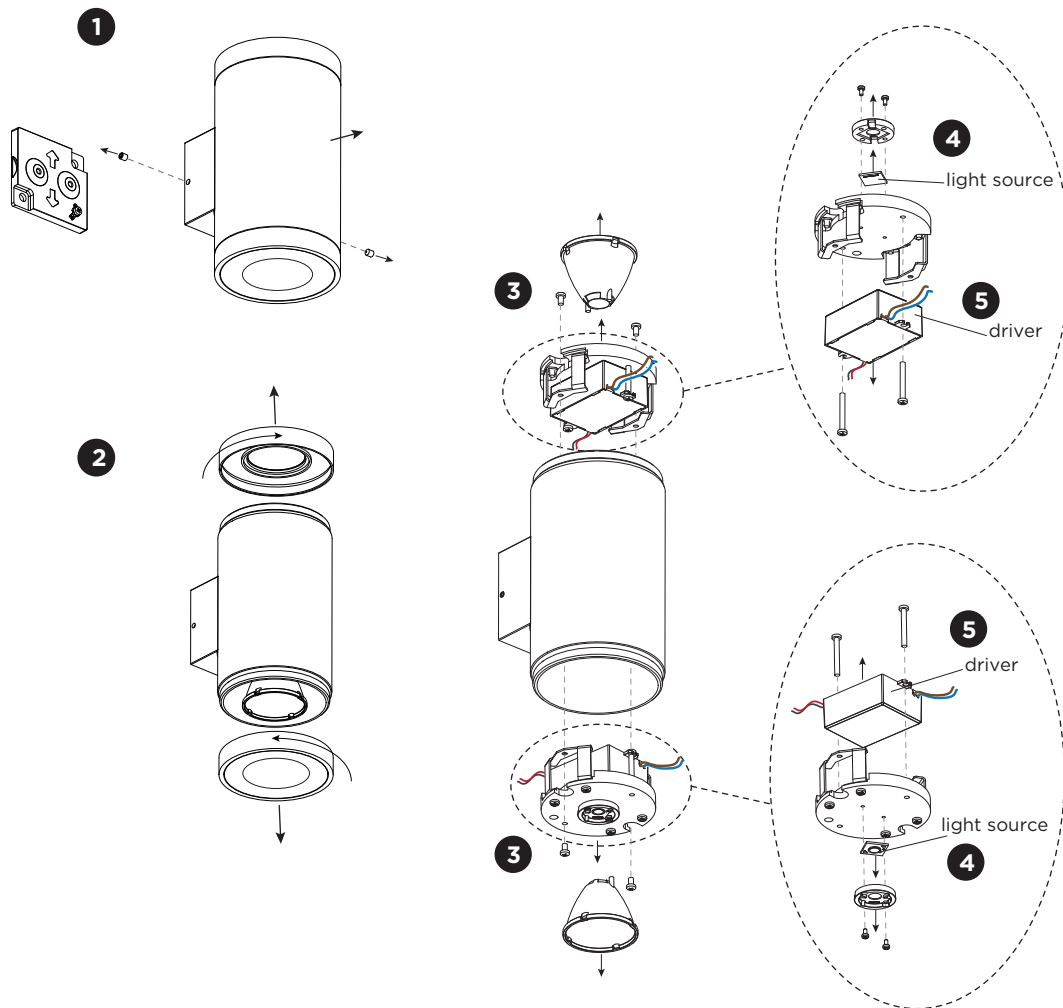


WEVER & DUCRÉ
LIGHTING

WEVER & DUCRÉ BV
Spinnerijstraat 99/21, 8500 Kortrijk, Belgium
weverducre.com

TUBE wall 2.0 LED

INSTALLATION INSTRUCTIONS | AUGUST 2023



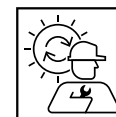
DISMOUNTING AND RECYCLING INSTRUCTIONS

Light source & driver

- 1 Dismount the fixture from the wall by loosening the socket screws and the wiring.
- 2 Turn the cover(s) counter clockwise and remove it/them.
- 3 Remove the reflector(s), loosen the wires and screws to remove the driver and LED assemblies.
- 4 Unscrew the holders to remove the light source(s).
- 5 Unscrew and remove the driver(s).



The driver is replaceable by an authorized professional.
For advice contact your Wever & Ducré customer service contact point.



The light source is replaceable by an authorized professional.
For advice contact your Wever & Ducré customer service contact point.



This luminaire contains a light source with the energy class F.