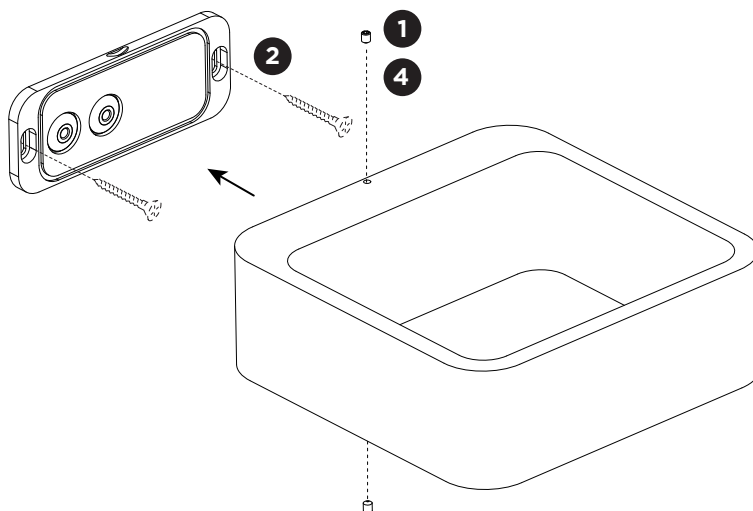
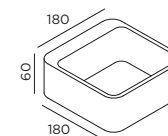


TAPE

INSTALLATION INSTRUCTIONS | SEPTEMBER 2023

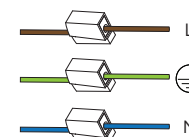


DIMENSIONS

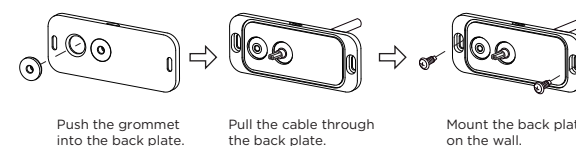


MOUNTING INSTRUCTION

- 1 Loosen the socket screws to remove the wall base.
- 2 Attach the wall base on the wall with screws (screws are not included).
- 3 **POWER CONNECTION**
Connect to 220-240V.

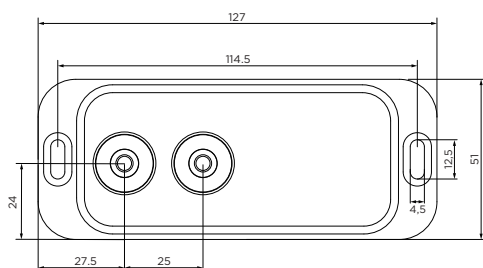


Always use a matching grommet based on the used 220-240V cable and the corresponding type in the overview table.



- 4 Attach the housing on the wall base with the socket screws.

wall base dimensions



Always use a matching grommet in the overview table.

	A	B	C
CABLE			
TYPE	ROUND H05RN-F H07RN8-F H07RN-F	ROUND H05RN-F	ROUND
OUTSIDE Ø	min 6.8mm max 8.9mm	min 5mm max 6.8mm	min 1.5mm max 2.6mm
CONDUCTION SECTION	2or3x 0.75mm² 2or3x 1.0mm² 2or3x 1.5mm²	2or3x 0.75mm² 2x 1.0mm²	0.75mm² 1.5mm²

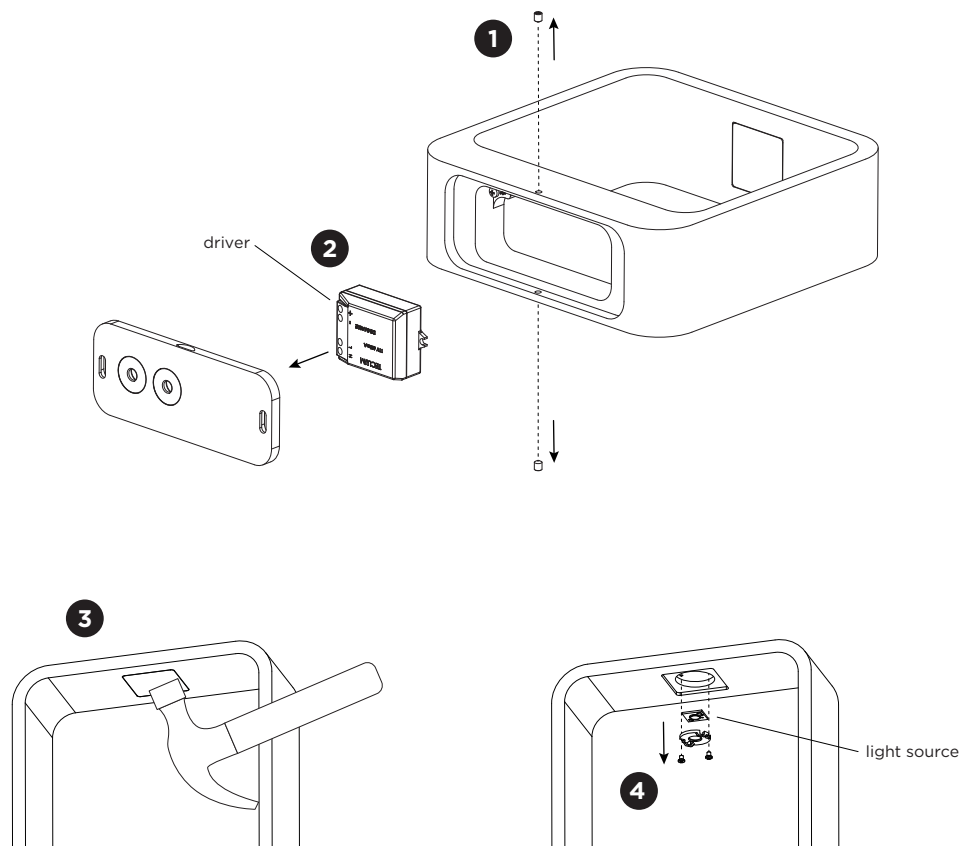


WEVER & DUCRÉ
LIGHTING

WEVER & DUCRÉ BV
Spinnerijstraat 99/21, 8500 Kortrijk, Belgium
weverducre.com

TAPE

INSTALLATION INSTRUCTIONS | SEPTEMBER 2023



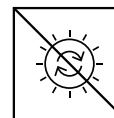
DISMOUNTING AND RECYCLING INSTRUCTIONS

Driver

- 1 Loosen the socket screws and remove the fixture from the mounting plate.
- 2 Disconnect the wires and remove the driver.
- 3 Break the glass.
- 4 Unscrew the holder to remove the light source.



The driver can be replaced by the end user.



The light source is not replaceable.



This luminaire contains a light source with the energy class F.



WEVER & DUCRÉ
LIGHTING

WEVER & DUCRÉ BV

Spinnerijstraat 99/21, 8500 Kortrijk, Belgium
weverducre.com