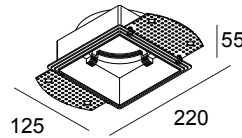
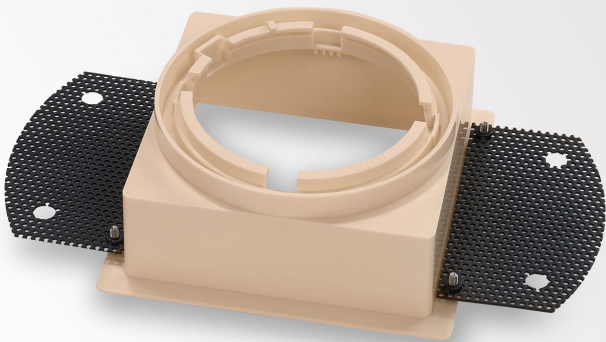


## MOUNTING KIT S102 TRIMLESS

400 92 00



 [View on website](#)

### General info

<b>LOCATION</b>	indoor
<b>CUTOUT SHAPE/SIZE (MM)</b>	square - 125 x 125
<b>THICKNESS OF MOUNTING SURFACE (MM)</b>	min.10 / max.15
<b>WEIGHT (KG)</b>	0.2

### Remarks

**Installing MOUNTING KIT in plasterboard**  
**Installing MOUNTING KIT in concrete + plaster**

For detailed installation instructions, please consult the manual: [400\\_92\\_00\\_HAND.pdf](#)

### WHERE USED

<b>24214 9210-S</b>	iMAX II SQUARE ADJUSTABLE TRIMLESS LP 92712
<b>24214 9220-S</b>	iMAX II SQUARE ADJUSTABLE TRIMLESS LP 92720
<b>24214 9230-S</b>	iMAX II SQUARE ADJUSTABLE TRIMLESS LP 92733
<b>24214 9310-S</b>	iMAX II SQUARE ADJUSTABLE TRIMLESS LP 93012
<b>24214 9320-S</b>	iMAX II SQUARE ADJUSTABLE TRIMLESS LP 93020
<b>24214 9330-S</b>	iMAX II SQUARE ADJUSTABLE TRIMLESS LP 93033
<b>24215 9210-S</b>	iMAX II SQUARE ADJUSTABLE TRIMLESS MP 92718
<b>24215 9220-S</b>	iMAX II SQUARE ADJUSTABLE TRIMLESS MP 92726
<b>24215 9230-S</b>	iMAX II SQUARE ADJUSTABLE TRIMLESS MP 92739
<b>24215 9310-S</b>	iMAX II SQUARE ADJUSTABLE TRIMLESS MP 93018
<b>24215 9320-S</b>	iMAX II SQUARE ADJUSTABLE TRIMLESS MP 93026
<b>24215 9330-S</b>	iMAX II SQUARE ADJUSTABLE TRIMLESS MP 93039
<b>24224 9210-S</b>	iMAX II SQUARE ADJUSTABLE TRIMLESS CL 9276
<b>24224 9310-S</b>	iMAX II SQUARE ADJUSTABLE TRIMLESS CL 9306
<b>24231 9030-S</b>	iMAX II SQUARE ADJUSTABLE TRIMLESS SOFT 93045



## **MOUNTING KIT S102 TRIMLESS**

400 92 00

Notes: