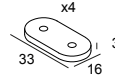
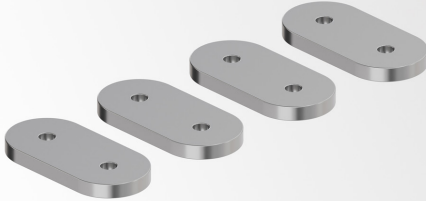


MIKALINE - JUNCTION 2 FLEX SET C

30610 0010 C

AVAILABLE IN
CHROMED 30610 0010 C



 [View on website](#)

General info

LOCATION	indoor
WEIGHT (KG)	0.1
INFORMATION	SET OF 4 PCS

For detailed installation instructions, please consult the manual: [30610_0010_HAND.pdf](#)

WHERE USED

30611 9200	MIKALINE L148 927
30611 9300	MIKALINE L148 930
30612 9200	MIKALINE L198 927
30612 9300	MIKALINE L198 930
30613 9200	MIKALINE L298 927
30613 9300	MIKALINE L298 930
30614 9220	MIKALINE-OH! L148 92734 MDL
30614 9320	MIKALINE-OH! L148 93034 MDL
30615 9220	MIKALINE-OH! L198 92734 MDL
30615 9320	MIKALINE-OH! L198 93034 MDL
30616 9220	MIKALINE-OH! L298 92734 MDL
30616 9320	MIKALINE-OH! L298 93034 MDL

Notes: